

## Stainless Steel-Tubular handles

### SPECIFICATION

Tube  $\varnothing$  28 x 2  
Stainless Steel

- AISI 304
- matt

Handle shanks  
Stainless Steel-precision casting

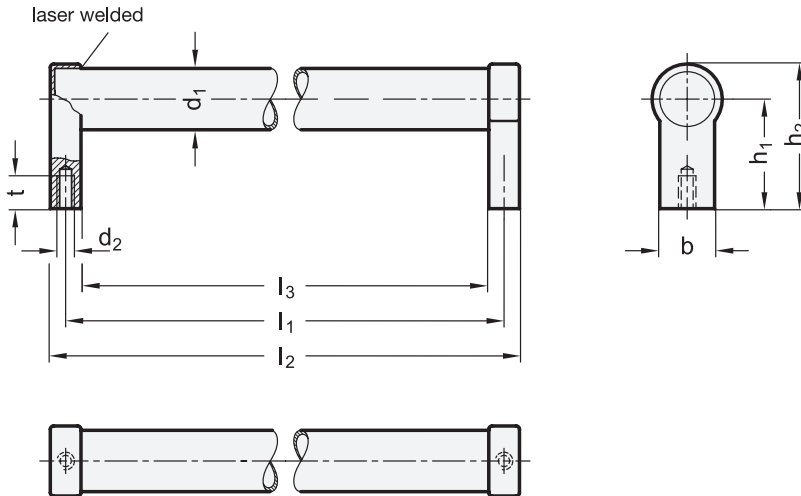
- AISI CF-8
- matt shot-blasted

### INFORMATION

The tube of the Stainless Steel-Tubular handles GN 333.5 is laser welded with the shanks without gap and with tight fit, preventing dirt from entering at this point.

### TECHNICAL INFORMATION

- Stainless Steel characteristics (see page A26)
- Load rating information (see page A35)



### GN 333.5

STAINLESS STEEL

Description	d1	l1 ±1	b	d2	h1	h2	l2	l3	t min.	⚖
GN 333.5-28-200	28	200	25	M 8	50	66	214	186	15	500
GN 333.5-28-250	28	250	25	M 8	50	66	264	236	15	563
GN 333.5-28-300	28	300	25	M 8	50	66	314	286	15	626
GN 333.5-28-400	28	400	25	M 8	50	66	414	386	15	760
GN 333.5-28-500	28	500	25	M 8	50	66	514	486	15	861
GN 333.5-28-600	28	600	25	M 8	50	66	614	586	15	900